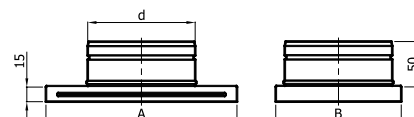


1. KASETA DOLOTOWA PROSTA KDP

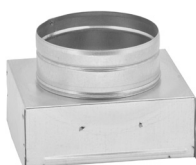


| Typ kratki | K1-Kz1 | K14-Kz14 | K2-Kz2 | K3-Kz3 | K4-Kz4 | K5-Kz5 |
|------------|---------|----------|---------|---------|---------|---------|
| A | 166 | 141 | 166 | 216 | 301 | 456 |
| B | 106 | 141 | 141 | 141 | 166 | 166 |
| d "spiro" | 100-110 | 100-125 | 100-150 | 100-150 | 100-150 | 100-150 |
| Waga [kg] | 0.20 | 0.23 | 0.25 | 0.35 | 0.55 | 0.60 |

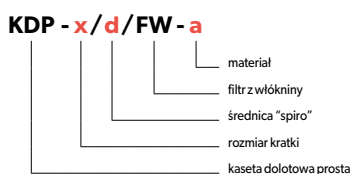
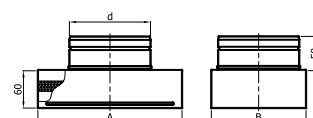


| | | |
|------------------------|----|---------------------------|
| Przeznaczenie elementu | W | W - przewody wentylacyjne |
| | O | O - ogrzewanie powietrzne |
| Materiał | OC | OC - bl. ocynkowana |

2. KASETA DOLOTOWA PROSTA Z FILTREM KDP/FW



| Typ kratki | K1-Kz1 | K14-Kz14 | K2-Kz2 | K3-Kz3 | K4-Kz4 | K5-Kz5 |
|------------|---------|----------|---------|---------|---------|---------|
| A | 166 | 141 | 166 | 216 | 301 | 456 |
| B | 106 | 141 | 141 | 141 | 166 | 166 |
| d "spiro" | 100-110 | 100-125 | 100-150 | 100-150 | 100-150 | 100-150 |
| Waga [kg] | 0.40 | 0.45 | 0.50 | 0.70 | 0.80 | 0.95 |

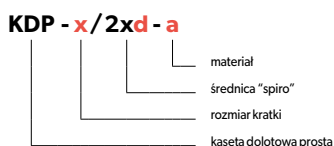
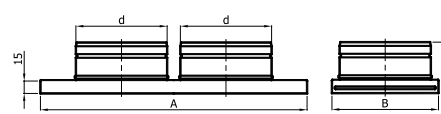


| | | |
|------------------------|----|---------------------------|
| Przeznaczenie elementu | W | W - przewody wentylacyjne |
| | O | O - ogrzewanie powietrzne |
| Materiał | OC | OC - bl. ocynkowana |

3. KASETA DOLOTOWA PROSTA KDP PODWÓJNA



| Typ kratki | K4-Kz4 | K5-Kz5 |
|------------|---------|---------|
| A | 301 | 456 |
| B | 166 | 166 |
| d "spiro" | 100-125 | 100-150 |
| Waga [kg] | 0.63 | 0.68 |

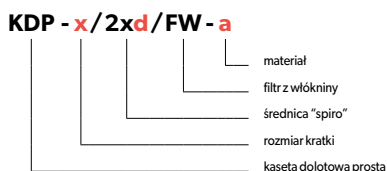
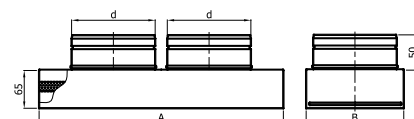


| | | |
|------------------------|----|---------------------------|
| Przeznaczenie elementu | W | W - przewody wentylacyjne |
| | O | O - ogrzewanie powietrzne |
| Materiał | OC | OC - bl. ocynkowana |

4. KASETA DOLOTOWA PROSTA Z FILTREM KDP/FW PODWÓJNA

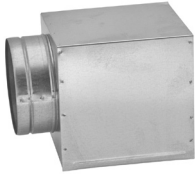


| Typ kratki | K4-Kz4 | K5-Kz5 |
|------------|---------|---------|
| A | 301 | 456 |
| B | 166 | 166 |
| d "spiro" | 100-125 | 100-150 |
| Waga [kg] | 0.63 | 0.68 |

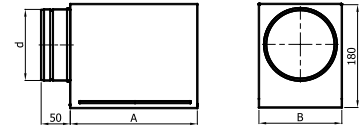


| | | |
|------------------------|----|---------------------------|
| Przeznaczenie elementu | W | W - przewody wentylacyjne |
| | O | O - ogrzewanie powietrzne |
| Materiał | OC | OC - bl. ocynkowana |

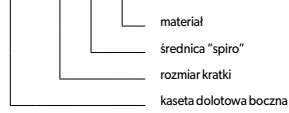
5. KASETA DOLOTOWA BOCZNA KDB



| Typ kratki | K1-Kz1 | K14-Kz14 | K2-Kz2 | K3-Kz3 | K4-Kz4 | K5-Kz5 |
|------------|---------|----------|---------|---------|---------|---------|
| A | 166 | 141 | 166 | 216 | 301 | 456 |
| B | 106 | 141 | 141 | 141 | 166 | 166 |
| d "spiro" | 100-110 | 100-125 | 100-150 | 100-150 | 100-150 | 100-150 |
| Waga [kg] | 0.50 | 0.60 | 0.70 | 0.85 | 1.15 | 1.50 |

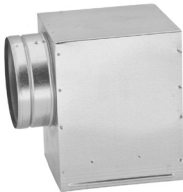


KDB - x/d - a

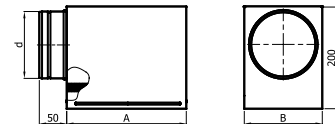


| | | |
|------------------------|----|---------------------------|
| Przeznaczenie elementu | W | W - przewody wentylacyjne |
| | O | O - ogrzewanie powietrzne |
| Materiał | OC | OC - bl. ocynkowana |

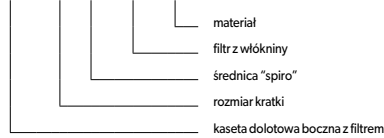
6. KASETA DOLOTOWA BOCZNA Z FILTREM KDB/FW



| Typ kratki | K1-Kz1 | K14-Kz14 | K2-Kz2 | K3-Kz3 | K4-Kz4 | K5-Kz5 |
|------------|---------|----------|---------|---------|---------|---------|
| A | 166 | 141 | 166 | 216 | 301 | 456 |
| B | 106 | 141 | 141 | 141 | 166 | 166 |
| d "spiro" | 100-110 | 100-125 | 100-150 | 100-150 | 100-150 | 100-150 |
| Waga [kg] | 0.55 | 0.65 | 0.75 | 0.90 | 1.20 | 1.60 |

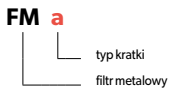
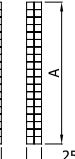
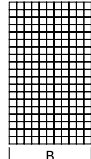
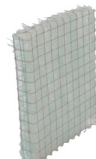
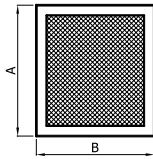


KDB - x/d/FW - a



| | | |
|------------------------|----|---------------------------|
| Przeznaczenie elementu | W | W - przewody wentylacyjne |
| | O | O - ogrzewanie powietrzne |
| Materiał | OC | OC - bl. ocynkowana |

7. FILTR DO KASETY DOLOTOWEJ FM, FW



| Typ kratki | K1-Kz1 | K14-Kz14 | K2-Kz2 | K3-Kz3 | K4-Kz4 | K5-Kz5 |
|--------------|--------|----------|--------|--------|--------|--------|
| A | 162 | 137 | 162 | 212 | 297 | 452 |
| B | 102 | 137 | 137 | 137 | 162 | 162 |
| Waga FM [kg] | 0.45 | 0.50 | 0.55 | 0.80 | 0.90 | 1.20 |
| Waga FW [kg] | 0.10 | 0.10 | 0.10 | 0.12 | 0.15 | 0.20 |

| | | |
|------------------------|---|---------------------------|
| Przeznaczenie elementu | W | W - przewody wentylacyjne |
| | O | O - ogrzewanie powietrzne |
| Materiał FM | M | M - metalowy |
| Materiał FW | - | W - z włókniny |

FW - temperatura ciągłej pracy do 120°C